

An aerial photograph of San Diego, showing a mix of urban development, green hills, and the city skyline in the distance under a clear blue sky.

San Diego  
**FORWARD**

# the draft 2021 regional plan

San Diego Institute of Transportation Engineers (ITE)  
June 10, 2021

**SANDAG**



# A bold new approach to planning for the future

Embracing data-driven planning, leveraging emerging technologies, and incorporating resident input

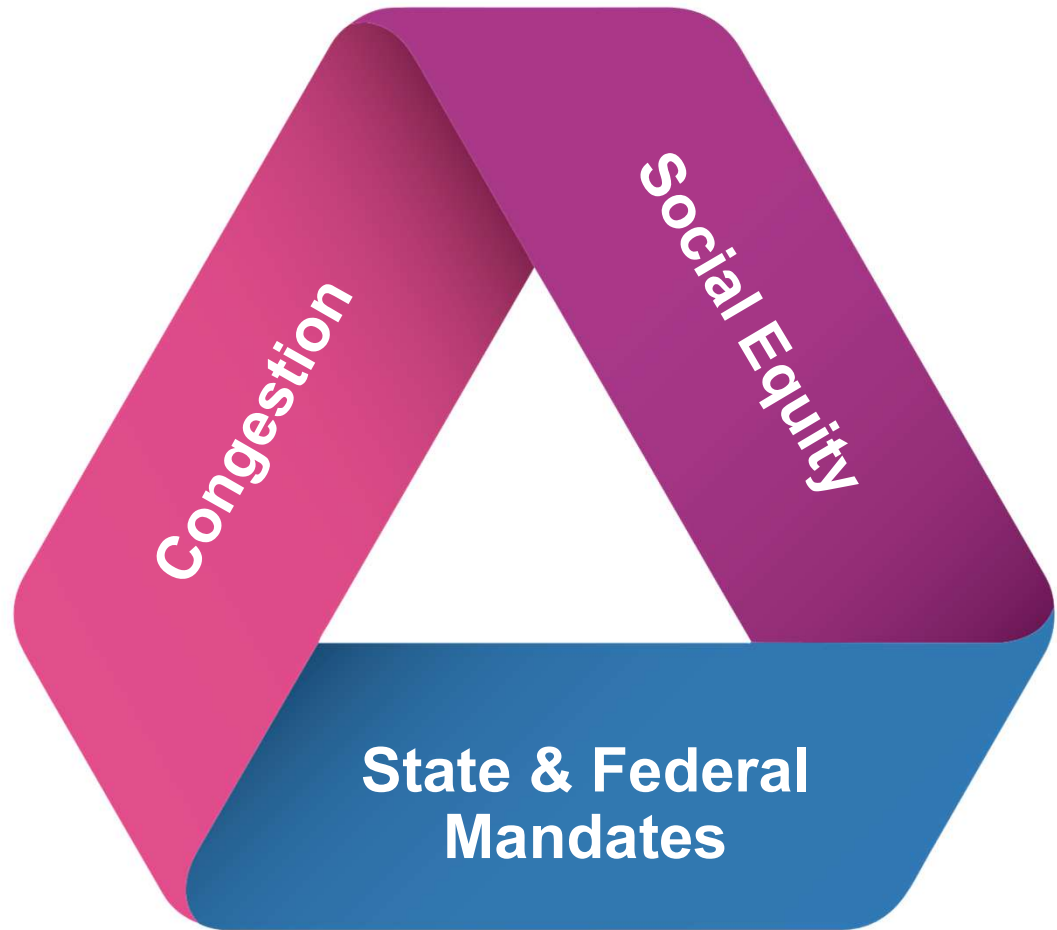
San Diego  
**FORWARD**



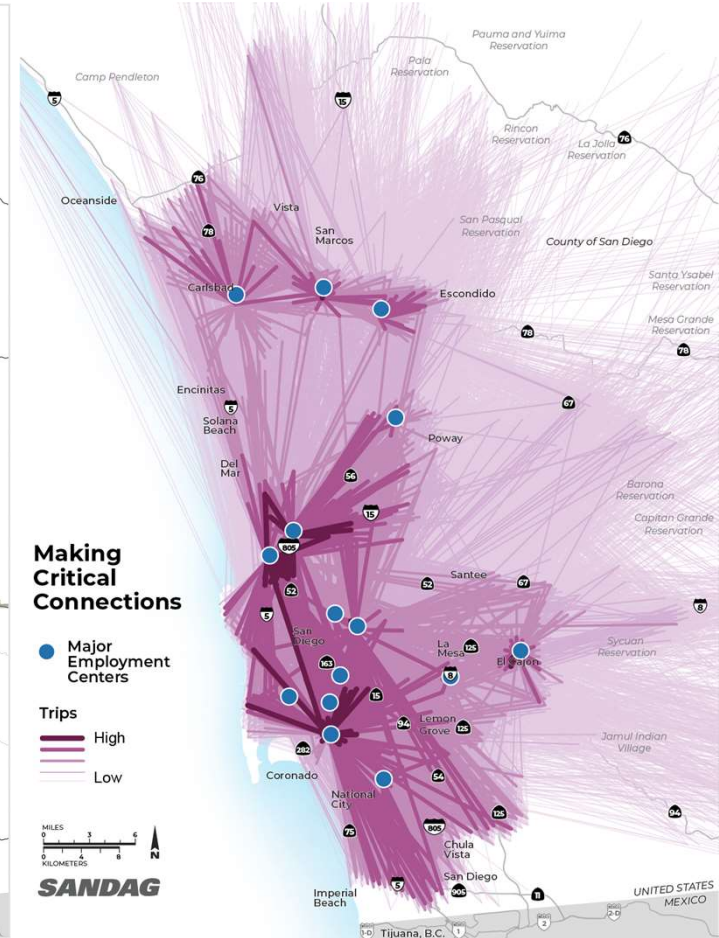
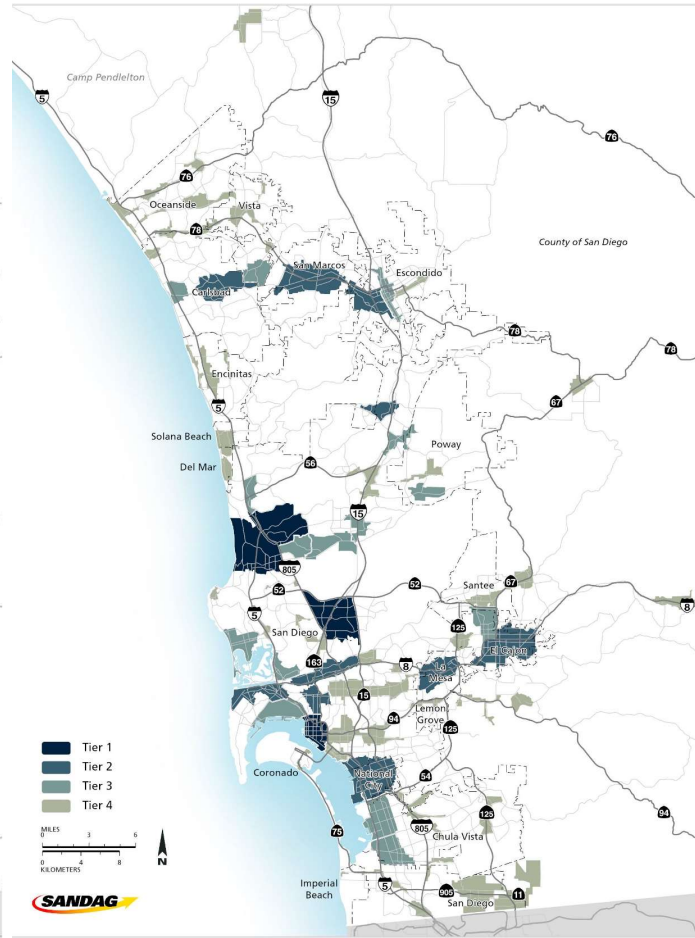
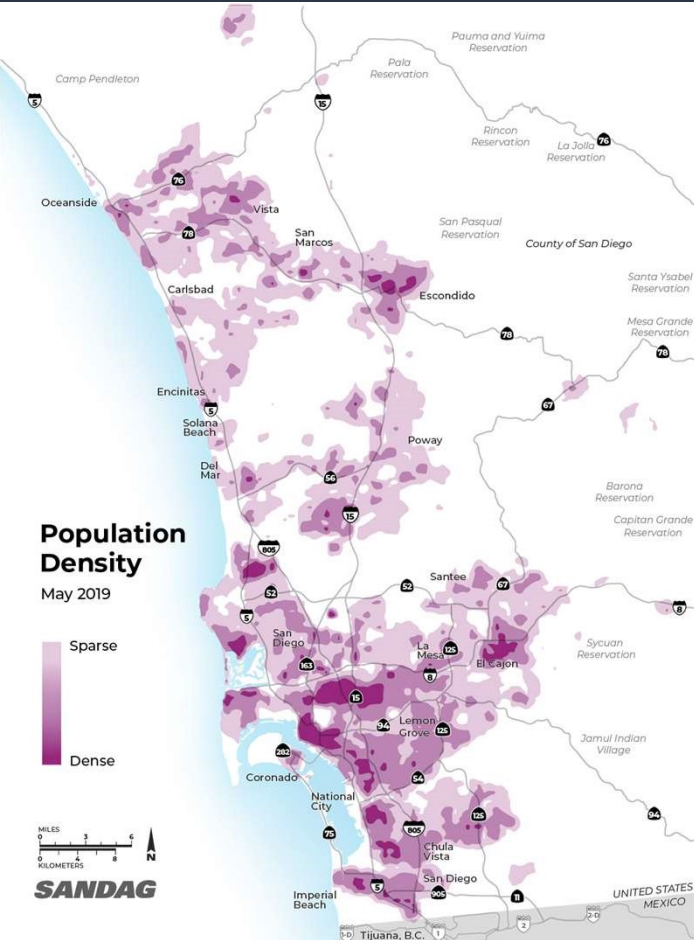
**SANDAG** | 2

# Three Challenges

- Reduce *congestion*
- Improve *social equity*
- Meet *state and federal mandates* to be **faster, fairer, and cleaner**

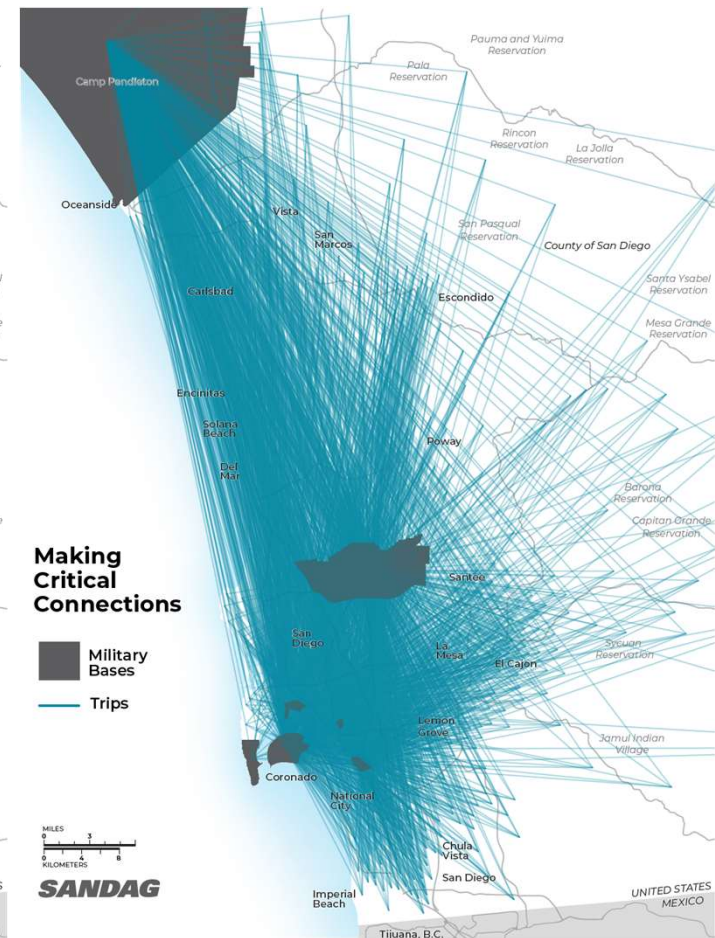
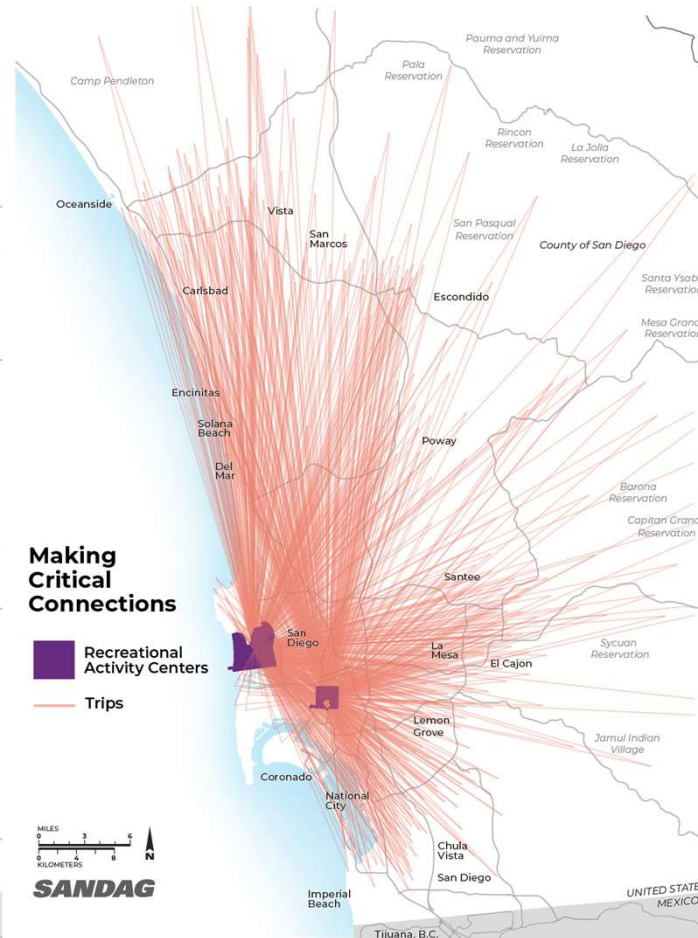


# Data-Driven Planning: Where people live and work

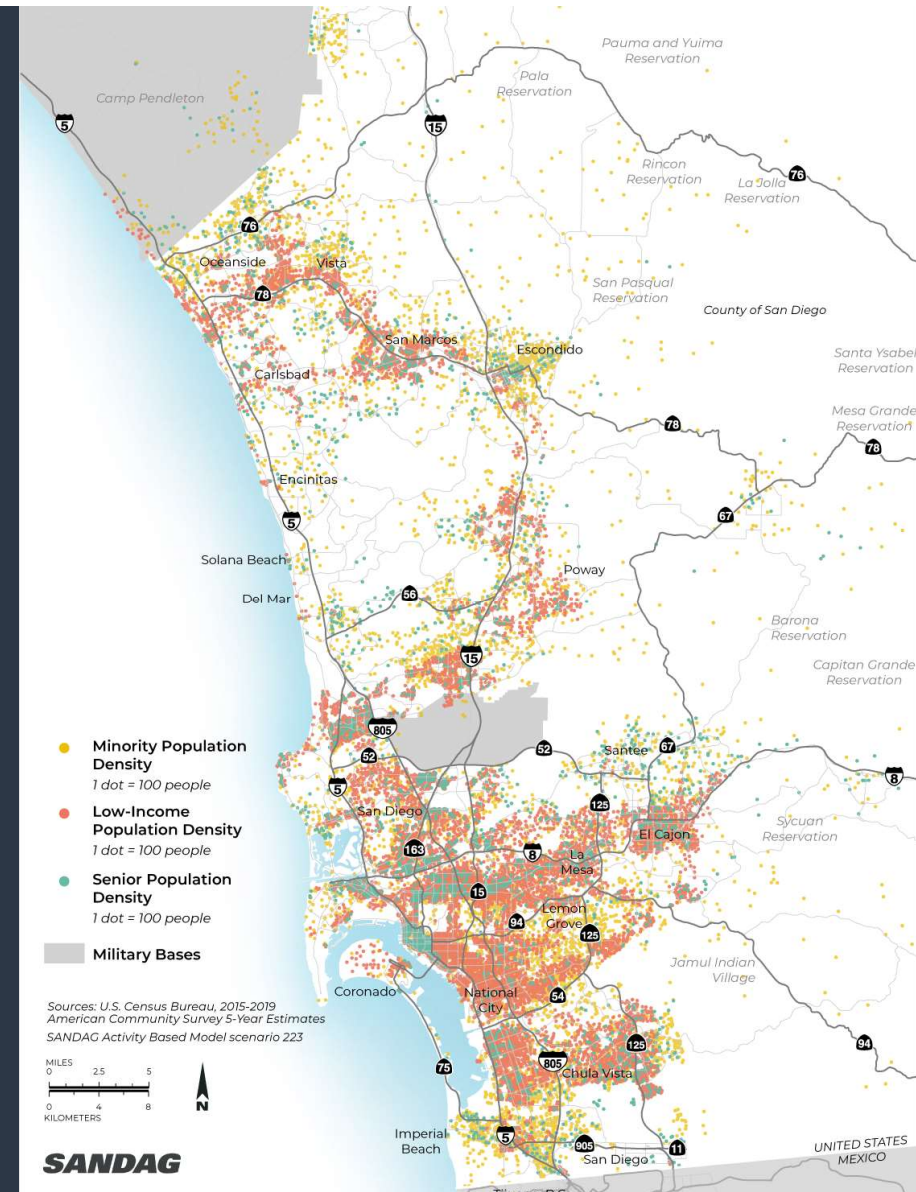




# Data-Driven Planning: Other regional trips



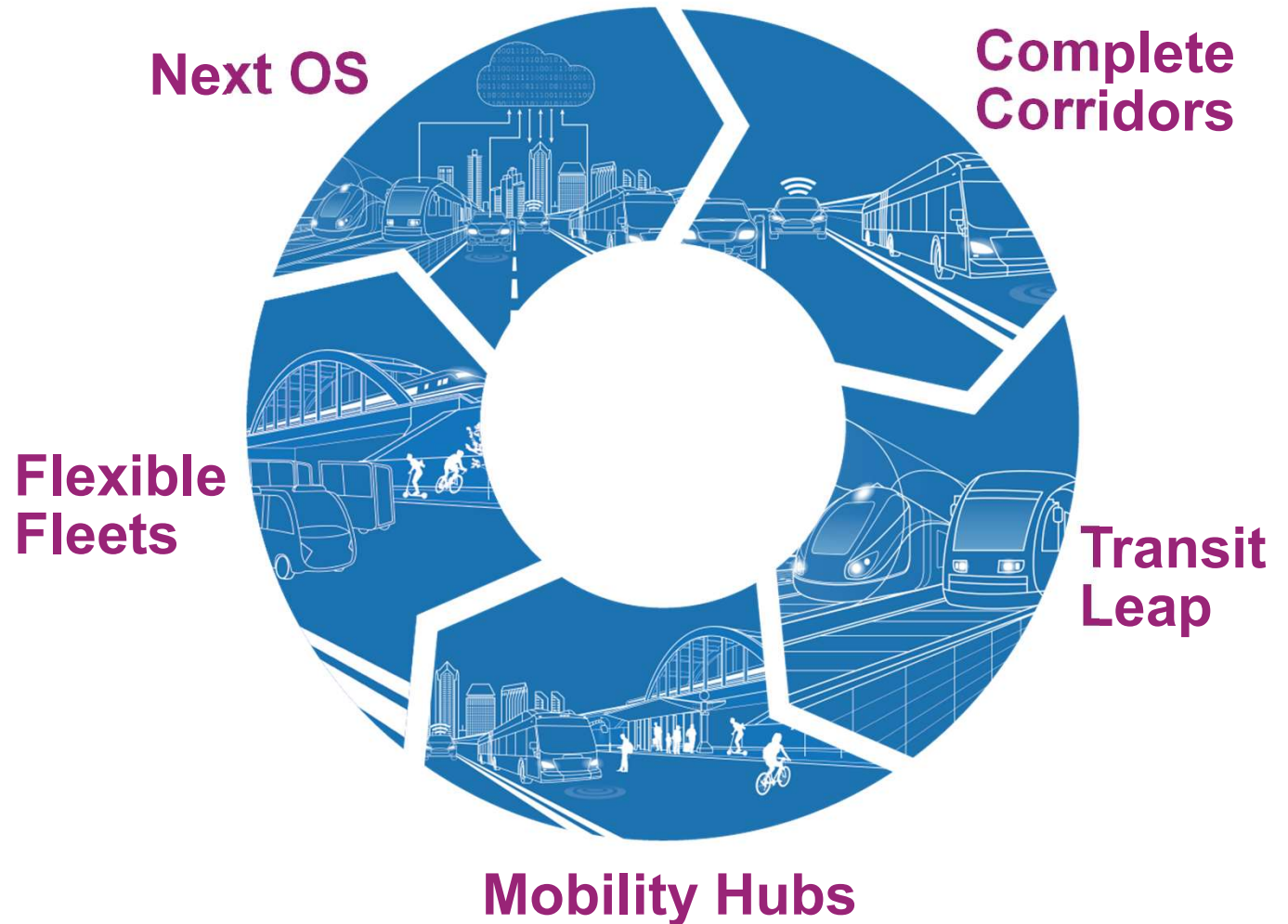
# Social Equity Populations





# 5 Big Moves

Inter-reliant strategies that work as one and enhance each other



# An Integrated System



**Commuter Rail**

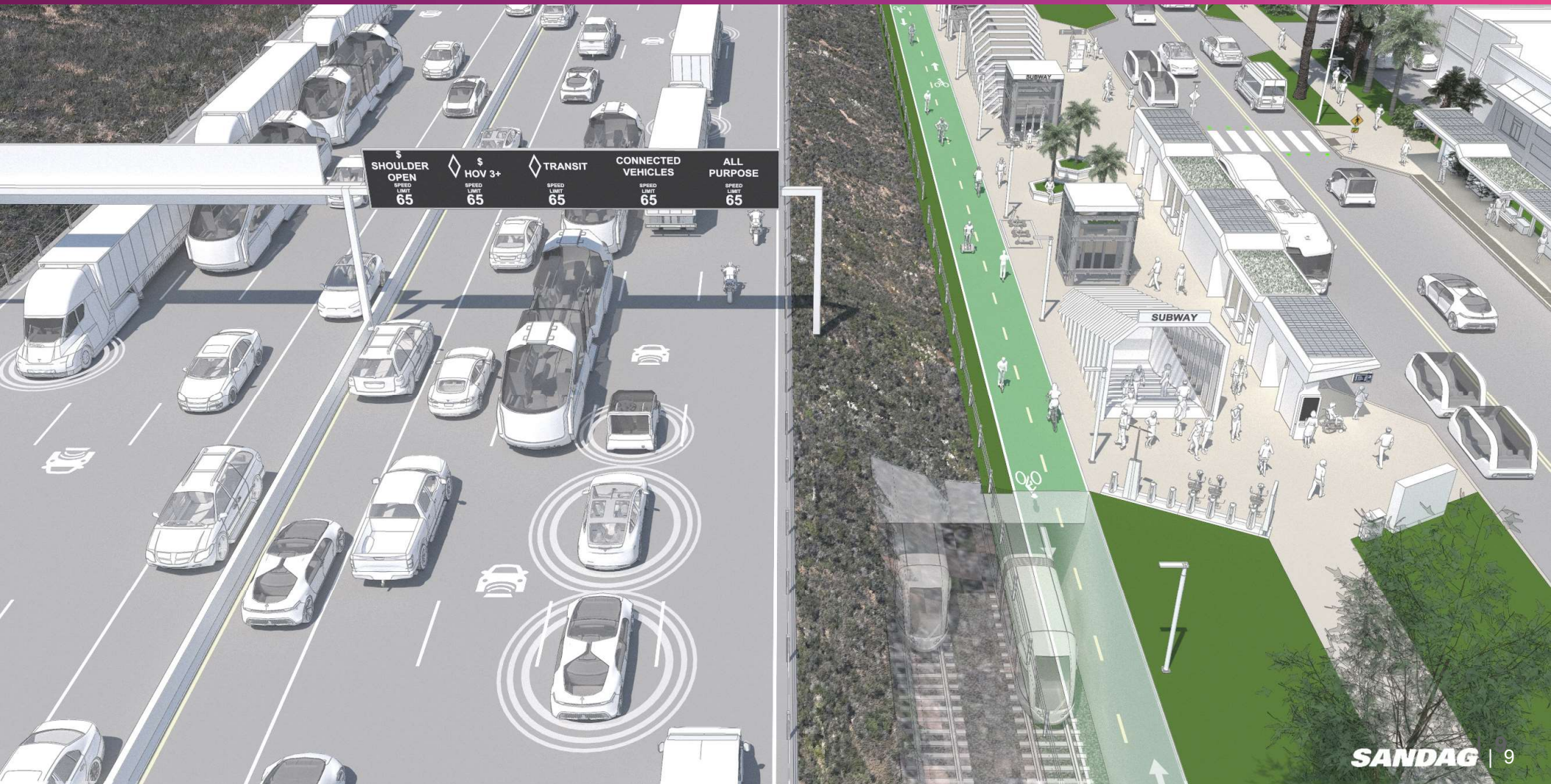
Higher-speed trains: 100+ mph

In tunnels or on bridges

Trains every 5–10 minutes, 22 hours/day



# Complete Corridors





# Complete Corridors Managed Lanes



San Diego  
**FORWARD SANDAG** | 10



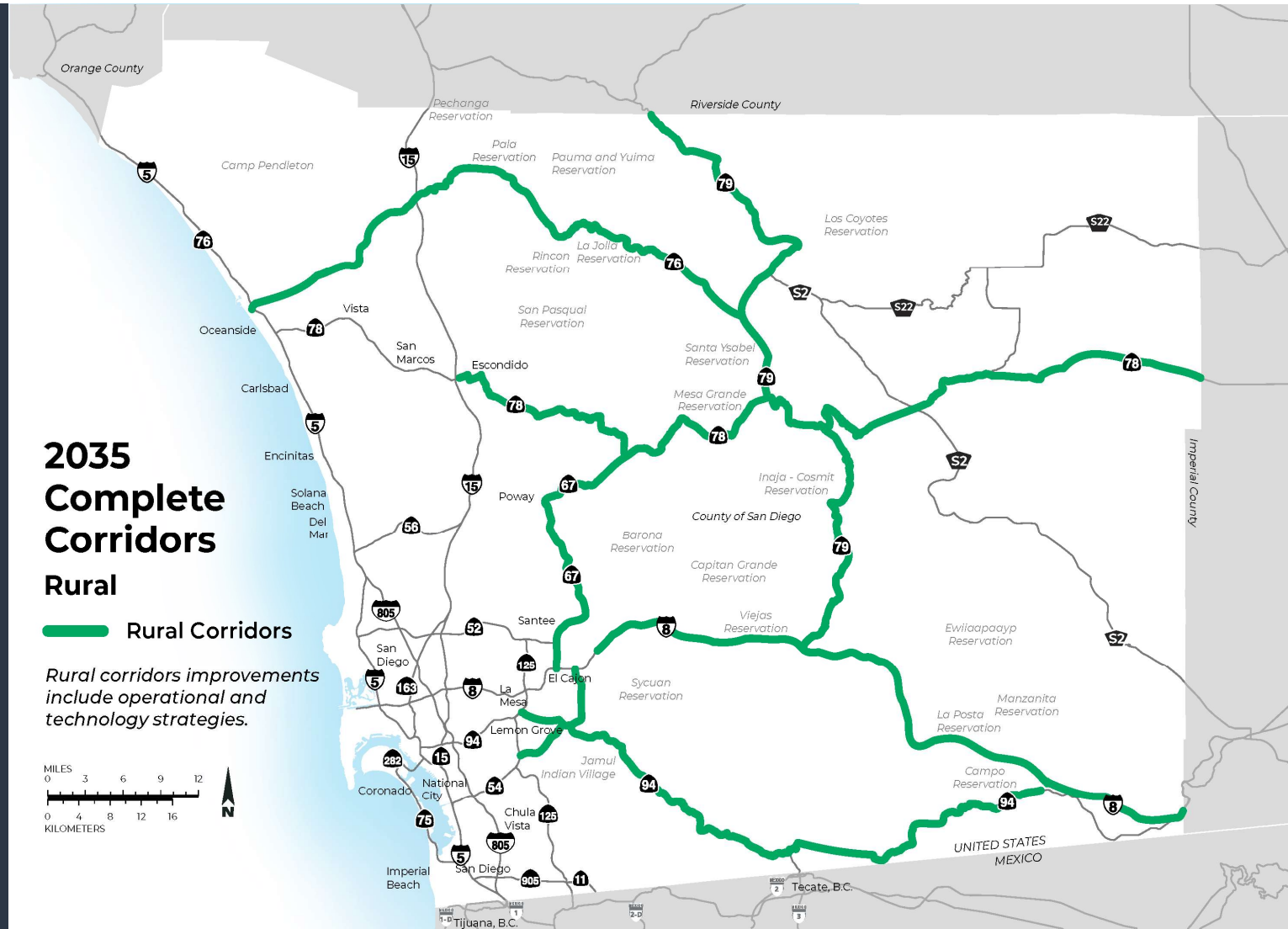
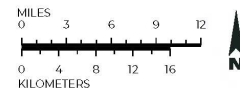


# Rural Corridors Safety and Next OS

## 2035 Complete Corridors Rural

 Rural Corridors

*Rural corridors improvements include operational and technology strategies.*



Complete Corridors: Local Roadway Regional Smart Intersection System



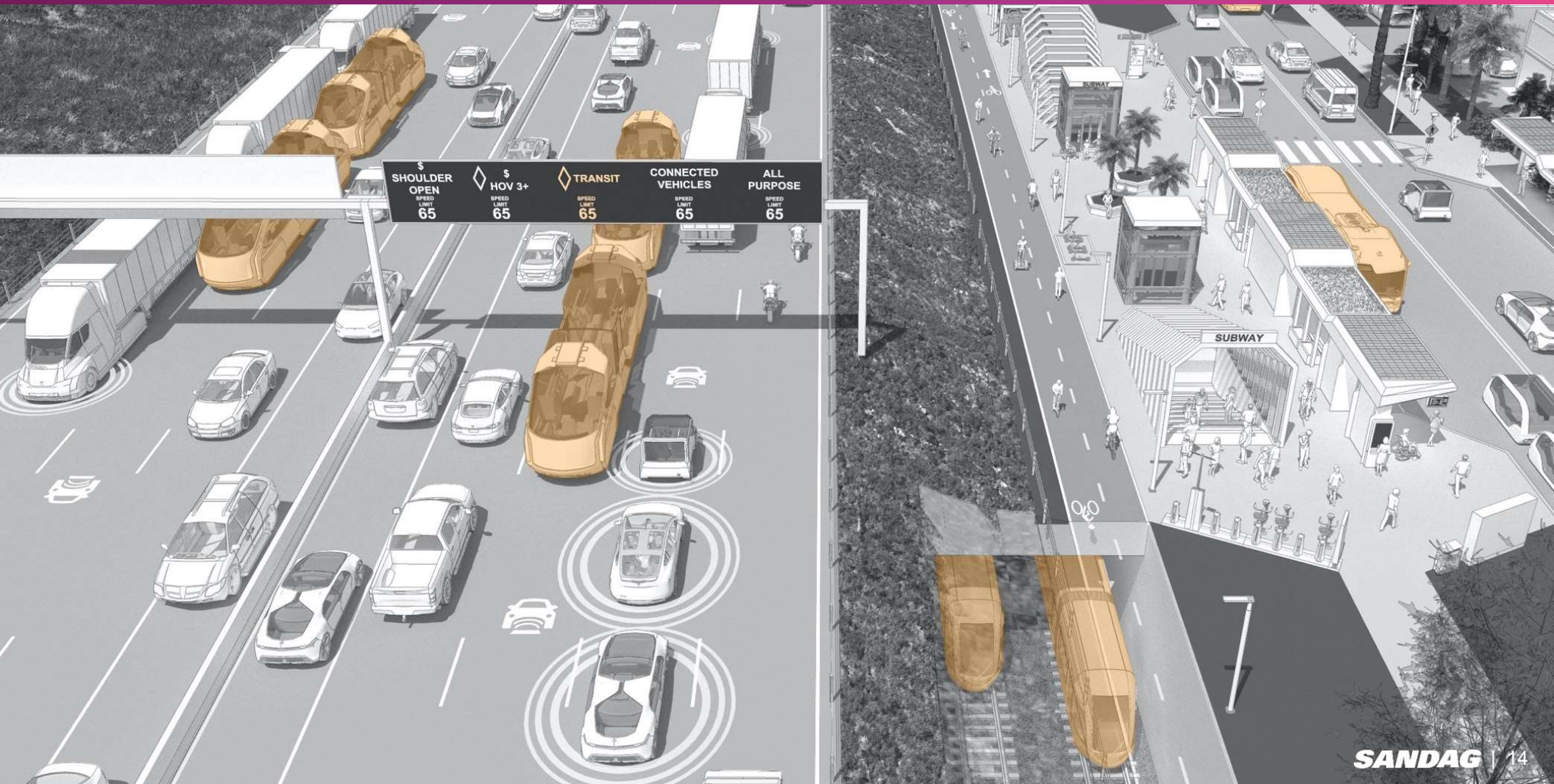


# Active Transportation Bike Network, Vision Zero, and E-bikes





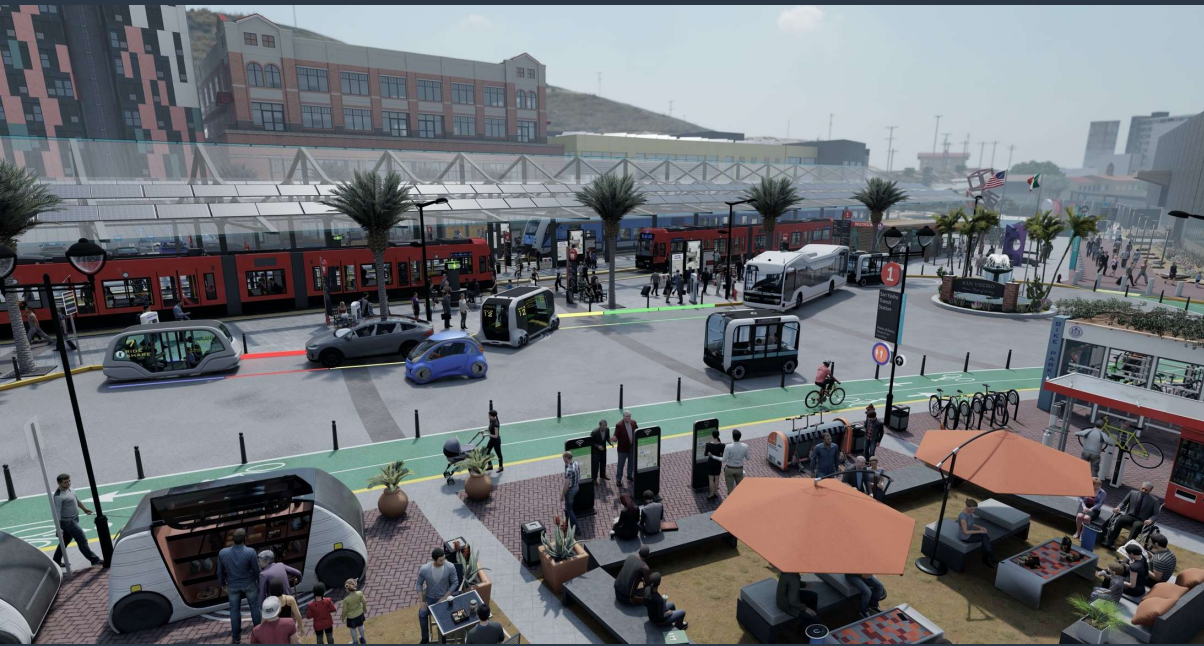
# Transit Leap



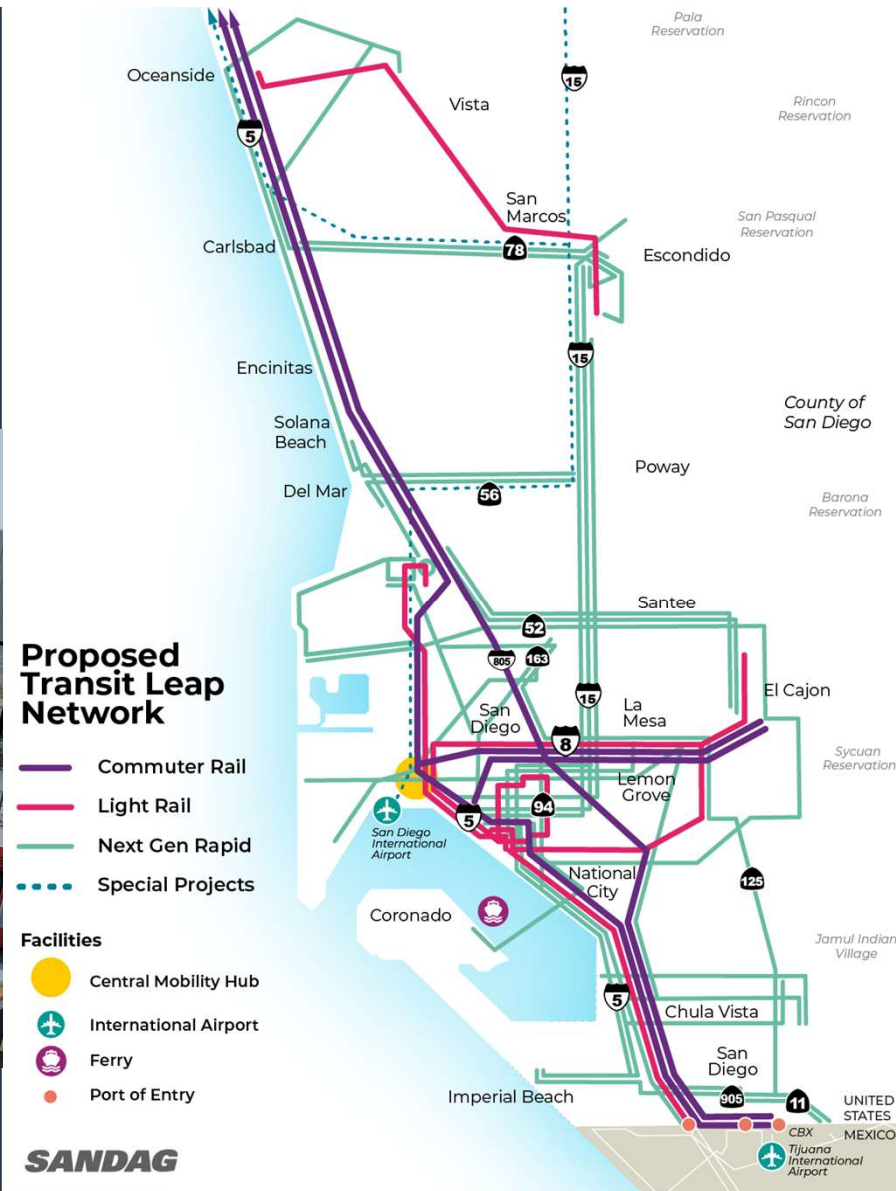


# Transit Leap

## Commuter Rail, Light Rail, expanded *Rapid*, enhanced service



San Diego  
**FORWARD SANDAG** | 15





# Mobility Hubs and Flexible Fleets

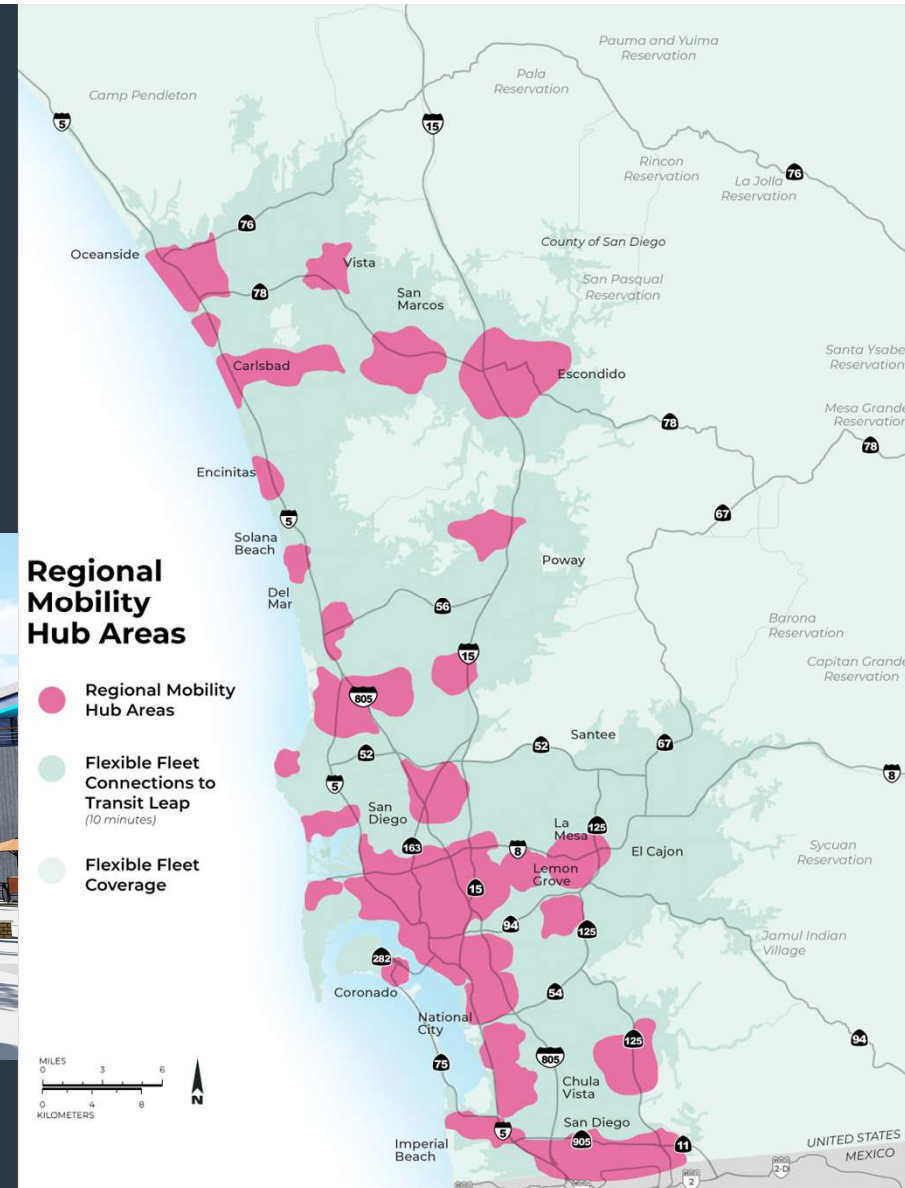




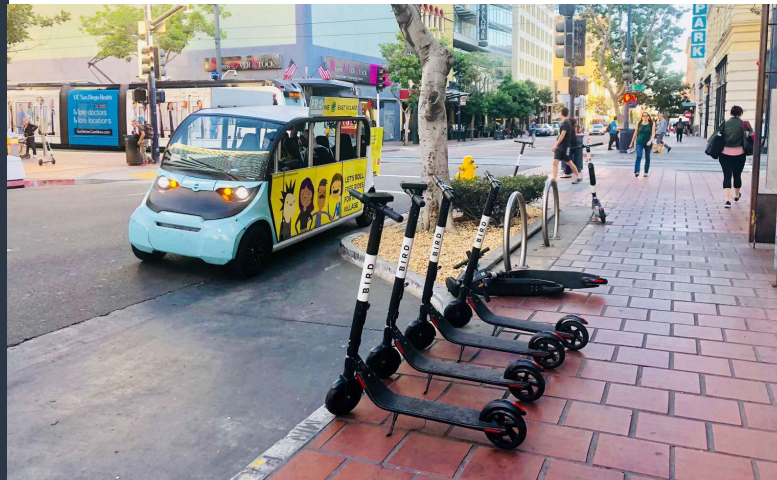
# Mobility Hub Areas and Flexible Fleet Coverage



San Diego  
**FORWARD SANDAG** | 17

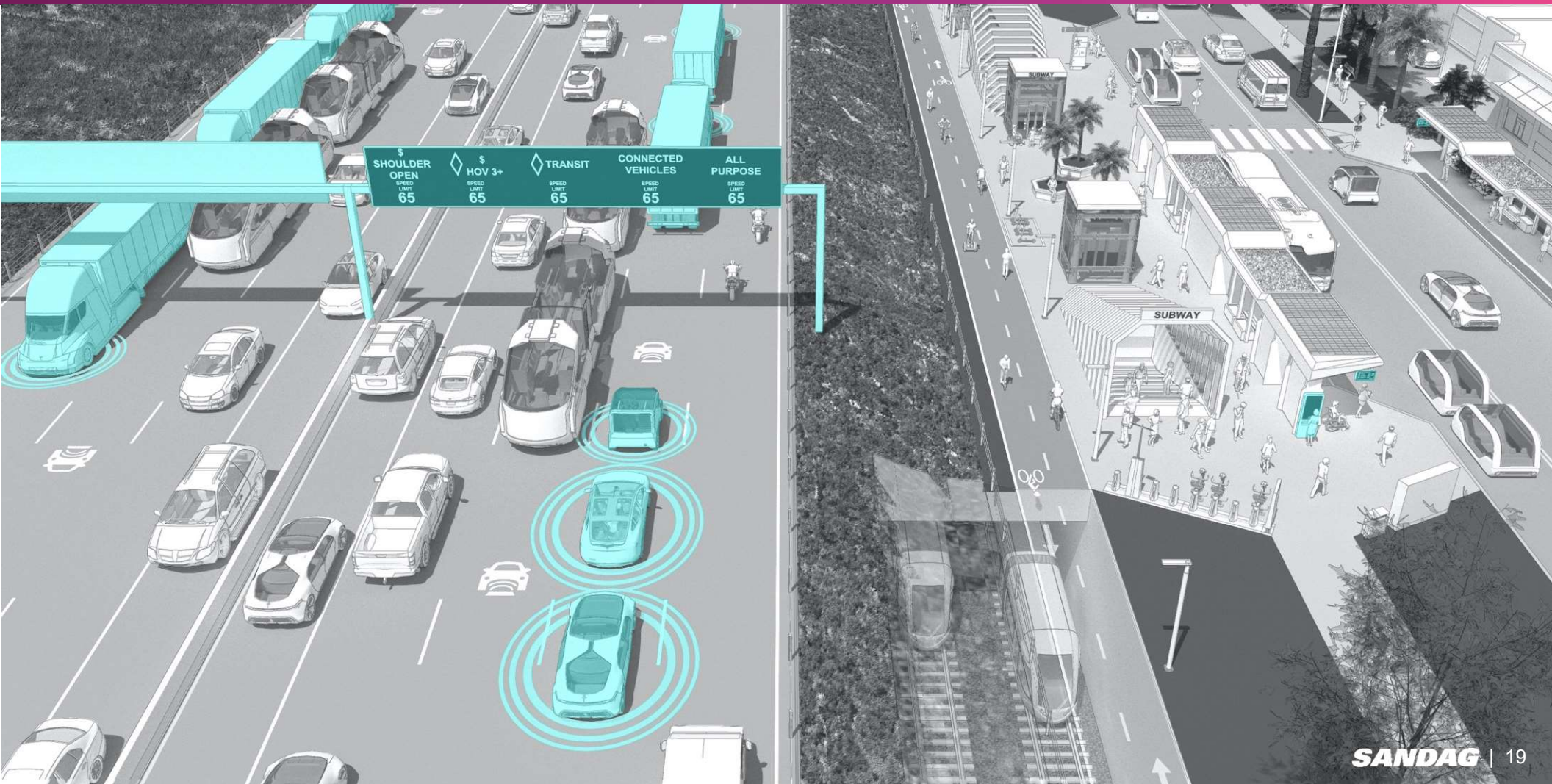


# Flexible Fleets Pilots and Services



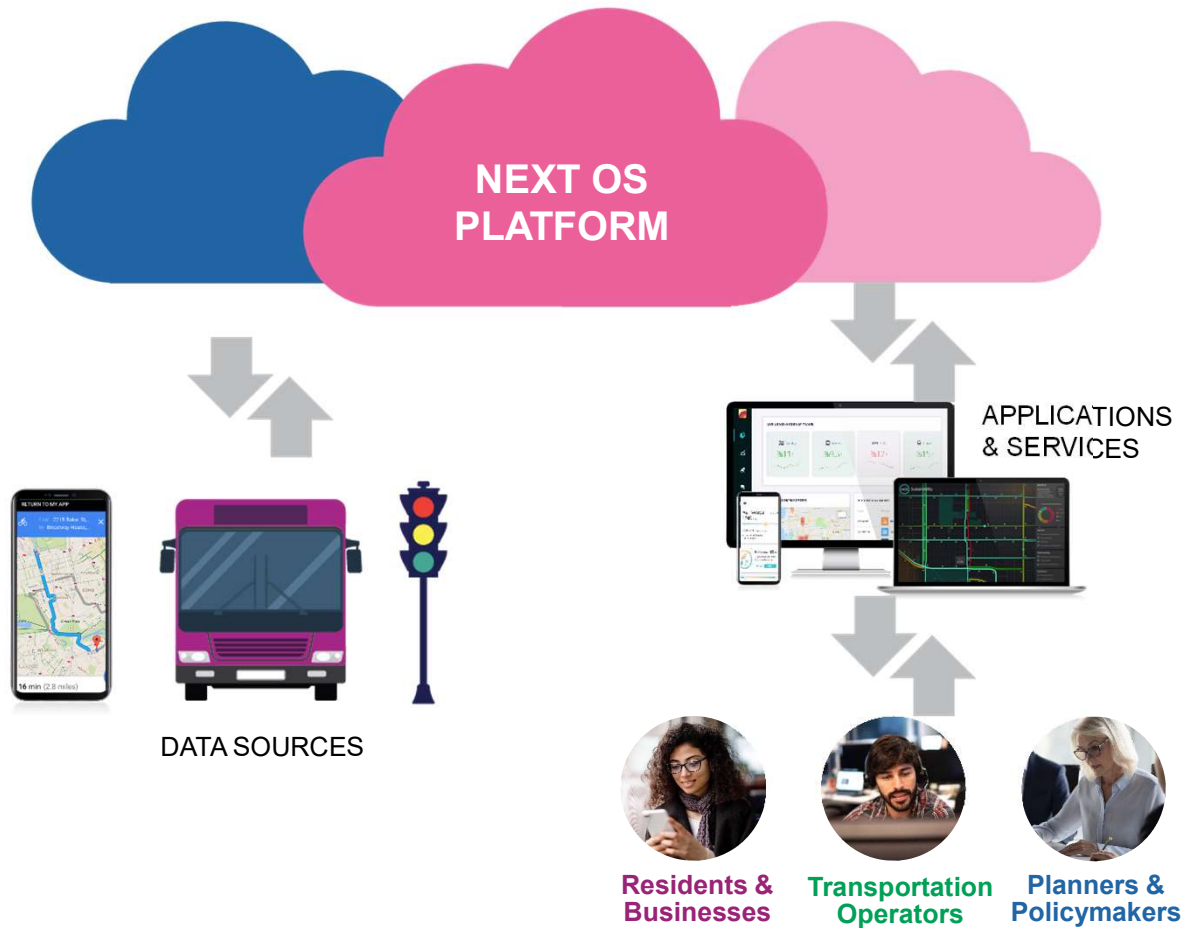


# Next operating System



## Next OS

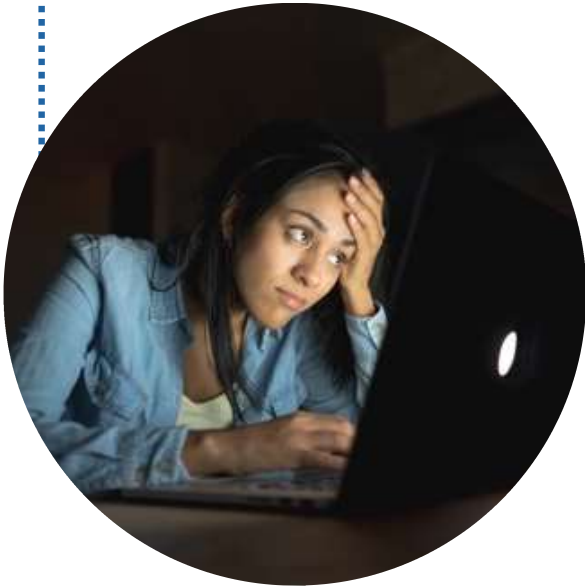
The technology that makes the transportation ecosystem work





# Broadband Connectivity and Internet Access

**23%**  
households without a  
broadband subscription  
among those earning  
< \$50,000/year



**20 – 40%**  
under connected students  
or lacking home internet  
access in many local districts



**42%**  
people living in our rural  
areas that have fixed internet  
versus 97% in urban areas





**18%** reduction in drive alone commute trips by 2050

DRAFT





**3x** Social equity populations living within ½ of Rapid, light rail, or commuter rail stop

DRAFT



DRAFT

**20%** reduction in per capita GHG emissions  
can be achieved by 2035 in the region



# 2021 Regional Plan Timeline

2021

MAY 28-JULY 30


**Draft  
Plan Public  
Comment  
Period**

SUMMER

**Release  
Draft EIR**

FALL

**Adopt Plan  
and Certify EIR**

 Layer List

Layers

☒ Complete Corridors - Connectors and Ramps

☐ Managed Lanes Connector

☐ Freeway Connector

☐ Freeway and Managed Lanes Connector

☐ Direct Access Ramp

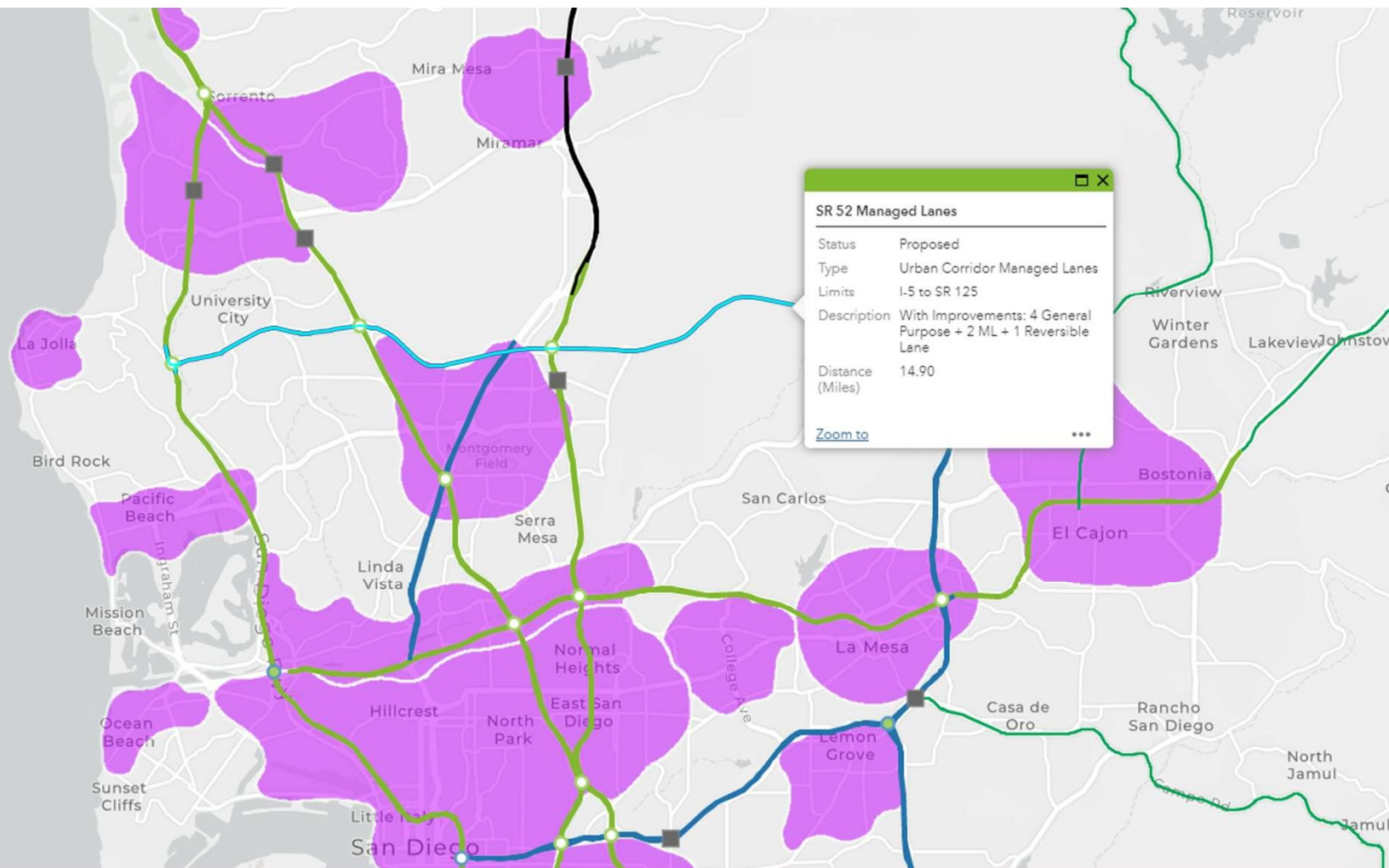
☒ Complete Corridors - Highway

☐ Existing Managed Lanes

☐ Interregional Corridor Managed Lanes

☐ Urban Corridor Managed Lanes

☐ Rural Corridor



# Data Viewer



# Stay Connected



EXPLORE THE VISION  
**SDForward.com/envision**



ATTEND A VIRTUAL MEETING  
**SDForward.com/calendar**



SIGN UP TO OUR PROJECT EMAIL LIST  
**SDForward.com/subscribe**



SUBMIT A COMMENT  
**SDForward.com/comments**



EMAIL US  
**SDForward@sandag.org**



FOLLOW US ON SOCIAL MEDIA  
**@SANDAGregion @SANDAG**



#SDForward #5BigMoves